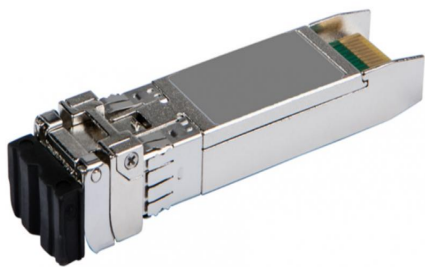


HPE JL486A Datablad



Aruba JL486A 25G SFP28 LC LR 10km SMF Transceiver

JL486A

Aruba JL486A 25G SFP28 LC LR 10km SMF Transceiver

Aruba 25G SFP28 LC LR 10km SMF Transceiver

SKU # JL486A

specifikationer

- Differentiator: 25G SFP28 LC LR 10km SMF transceiver til brug i udvalgte Aruba produkter.
- Garanti: For din produktgarantidækning, se venligst Aruba produktgarantioversigt
<https://www.arubanetworks.com/assets/support/warranty-coverage-quick-reference.pdf>
- Vægt: 0,1 lb
- Vægt: 20 gm
- Minimumsmål (H x B x D): 0,5 x 0,6 x 2,2 tommer
- Minimumsmål (H x B x D): 1,3 x 1,5 x 5,6 cm

For mere information om denne HPE Aruba JL486A, besøg venligst HPEs websted:

<https://buy.hpe.com/us/en/options/transceivers/transceivers/networking-sfp28-form-factor/aruba-25g-sfp28-lc-lr-10km-smf-transceiver/p/jl486a>

[Køb nu](#)